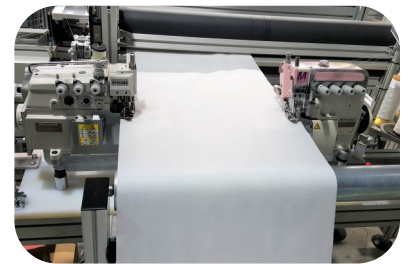
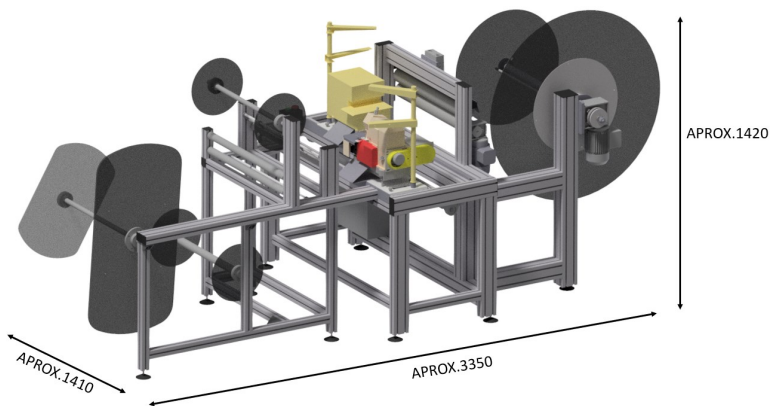
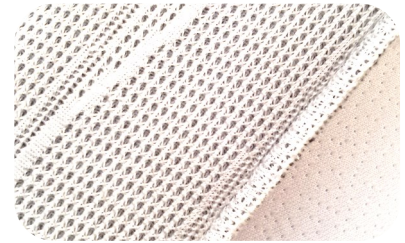
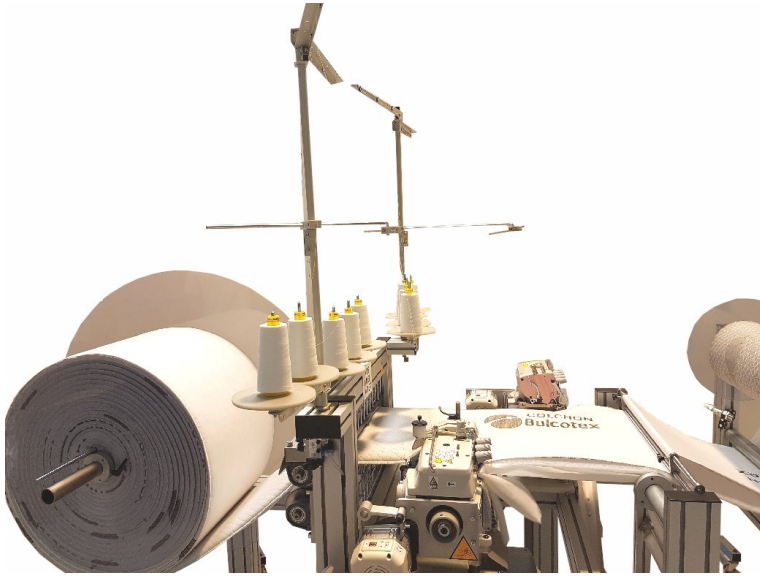




# VT APU B1



Band width	Up to 400 mm
Materials feeder	Support for 3 materials Product end detectors
Sewing heads	Overlock 5 hilos with safety stitch PEGASUS / KINGTEX Thread break detectors
Winder	Winder for finished product

Power supply	220 V / 240 V    50Hz / 60 Hz
Pneumatic supply	6 Bar
Weight	440 Kg